



SE215

Sound Isolating™ Earphones

The Shure SE215 Sound Isolating™ earphones user guide. Includes how to wear, how to clean, and earphone specifications.
Version: 1.1 (2024-I)

Table of Contents

SE215 Sound Isolating™ Earphones	3	Maintenance and Cleaning	5
Important Safety Information	3	Cleaning the Earphone Nozzle	6
General Description	3	Specifications	6
Inserting the Earphones	3	SAFETY PRECAUTIONS	7
Wearing the Earphones	3	WARNING FOR ALL EARPHONES!	7
Changing Sleeves	4	SAFETY PRECAUTIONS	7
Detachable Cable	4	WARNING	7
Removing the Earphones	5	CAUTION	8
		IMPORTANT SAFETY INSTRUCTIONS	8
		Certifications	8

SE215 Sound Isolating™ Earphones

Important Safety Information

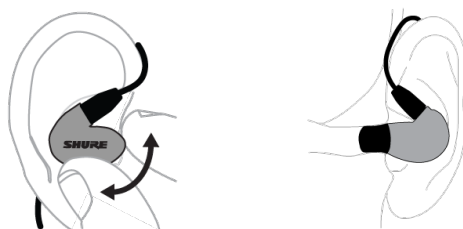
Before using this product, please read the warnings and safety instructions: [SAFETY PRECAUTIONS](#)

General Description

Shure Sound Isolating™ Earphones, deliver a detailed soundstage free from outside noise. The powerful and stylish Shure SE earphones come with a detachable cable, adapters, a durable carrying case, and interchangeable Sound Isolating sleeves for a comfortable and personalized fit.

Inserting the Earphones

Insert the earphones so they form a tight seal. The fit of the earphone can greatly affect sound quality.

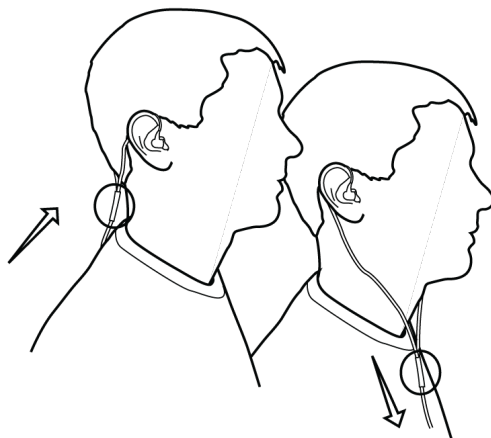


Important: If there seems to be a lack of low frequency response (bass), this means that the earphone sleeve is not forming a tight seal. Gently push the earphone deeper into the ear canal or try a different sleeve.

Warning: Do not push the earphone sleeve beyond the ear canal opening.

Wearing the Earphones

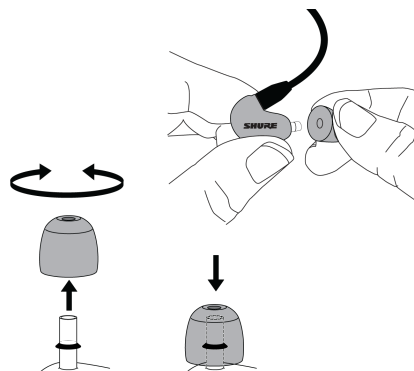
The following are some suggested ways of wearing the earphones.



Wear the cable over the ear and secure it behind the head to help keep the earphones in place during physical activity. Tighten the cable and take up slack by raising the cable cinch.

Changing Sleeves

- Twist and pull to remove the sleeve from the nozzle.
- Slide on a new sleeve so that it completely covers the barb and the nozzle.



Caution: If the barb or any of the nozzle is exposed, the sleeve is not properly installed. Replace sleeves if they do not tightly grip the nozzle. To ensure proper fit and performance, use only sleeves supplied by Shure (unless using custom molded sleeves).

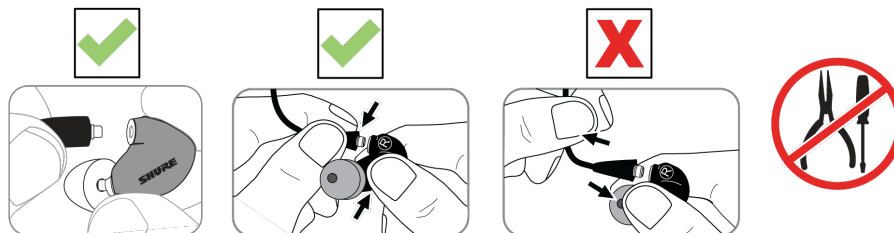
Detachable Cable

You may need to detach the cable from the earphones to attach optional components or to replace the cable if it becomes damaged. To prevent accidental separation, the connector has a snug fit. Take special care to prevent damage to the earphone and connector.

- Do not use pliers or other tools.
- Grasp the connector and the earphone as close as possible to where they join.
- Pull straight apart—do not twist. Cable is a snap fit, not threaded.

Note: If you pull at an angle, the connector will not detach.

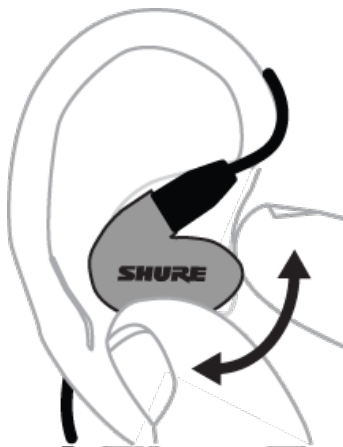
- Do not pull on the cable or put any pressure on the earphone nozzle.
- Listen for a click when connecting.
- When reattaching the cable, match the "L" and "R" markings. For clear cables and earphones, match the color dots (Red=Right, Blue=Left).



Audible click when properly connected

Removing the Earphones

Grasp the body of earphone and gently twist to remove.



Note: Do not pull on cable to remove earphone.

Maintenance and Cleaning

Careful maintenance ensures a tight seal between the sleeve and nozzle, improving sound quality and product safety.

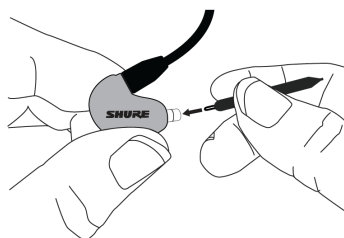
- Keep the earphones and sleeves as clean and dry as possible.
- To clean sleeves, remove them from earphones, gently rinse in warm water and air dry. Foam sleeves require a longer drying time. Inspect for damage and replace if necessary. Ear sleeves must be completely dry before reusing.
- Wipe the earphones and sleeves with mild antiseptic to avoid infections. Do not use alcohol-based disinfectants.
- Do not expose earphones to extreme temperatures.
- Replace sleeves if they do not fit properly.

- Do not attempt to modify this product. Doing so will void the warranty and could result in personal injury and/or product failure.

Cleaning the Earphone Nozzle

If you notice a change in sound quality, remove the sleeve and check the nozzle of your earphone. If nozzle is blocked, clear obstruction by using wire loop end of cleaning tool.

If no obstruction is found or if sound quality does not improve, replace the sleeve with a new sleeve.



Cleaning Tool

Caution: When cleaning, do not force any object through the earphone nozzle! This will damage the earphone sound filter.

Warning: The cleaning tool is only to be used to clean the earphones. Any other use, such as using the tool to clean ears or foam sleeve, could result in injury.

The cable connectors to the earphones may collect debris or other deposits that can affect audio quality. If this happens, disconnect the cables and clean them using a dry cotton swab.

Specifications

SE215 Earphone

Transducer Type

Single High-Definition MicroDriver

Sensitivity

at 1 kHz

107 dB SPL/mW

Impedance

at 1 kHz

17 Ω

Noise Attenuation

up to 37 dB

Frequency Range

SE215 Special Edition	21 Hz–17.5 kHz
SE215	22 Hz–17.5 kHz

Maximum Audio Input Power

100 mW

Charging Requirements

The radio equipment requires the power delivered by the charger to be between: A minimum of 0.5 Watts, and a maximum of 2.5 Watts in order to achieve the maximum charging speed

Input Connector

MMCX connectors

Net Weight

20.8 g (.7 oz.)

Operating Temperature

-18°C to 57°C (0°F to 135°F)

Storage Temperature

-29°C to 74°C (-20°F to 165°F)

SAFETY PRECAUTIONS



Before using this product, please read and save the enclosed warnings and safety instructions.

WARNING FOR ALL EARPHONES!

Use, clean, and maintain earphones according to manufacturer's instructions.

SAFETY PRECAUTIONS

The possible results of incorrect use are marked by one of the two symbols—"WARNING" and "CAUTION"—depending on the imminence of the danger and the severity of the damage.

	WARNING: Ignoring these warnings may cause severe injury or death as a result of incorrect operation.
	CAUTION: Ignoring these cautions may cause moderate injury or property damage as a result of incorrect operation.

WARNING

- If water or other foreign objects enter the inside of the device, fire or electric shock may result.
- Do not attempt to modify this product. Doing so could result in personal injury and/or product failure.
- Do not use when a failure to hear your surroundings could be dangerous, such as while driving, or when biking, walking, or jogging where traffic is present and accidents could occur.
- Keep this product and its accessories out of reach of children. Handling or use by children may pose a risk of death or serious injury. Contains small parts and cords that may pose risk of choking or strangulation.
- Prior to inserting the earphone, always recheck the sleeve to make sure it is firmly attached to the nozzle to decrease the risk of sleeves detaching from the nozzle and becoming lodged in your ear. If a sleeve becomes lodged in your ear, seek professional medical assistance to remove the sleeve.

- Stop using the earphones and consult a medical professional if you experience irritation, excessive wax buildup, or other discomfort.

CAUTION

- Never disassemble or modify the device, as failures may result.
- Do not subject to extreme force and do not pull on the cable or failures may result.
- Keep the earphone dry and avoid exposure to extreme temperatures and humidity.
- If you are currently receiving ear treatment, consult your physician before using this device.



High sound pressure

Hearing damage risk

To prevent possible hearing damage, do not listen at high volume levels for long periods.

IMPORTANT SAFETY INSTRUCTIONS

1. READ these instructions.
2. KEEP these instructions.
3. HEED all warnings.
4. FOLLOW all instructions.
5. DO NOT use this apparatus near water.
6. CLEAN ONLY with dry cloth.
7. DO NOT block any ventilation openings. Install in accordance with the manufacturer's instructions.
8. DO NOT install near any heat sources such as radiators, heat registers, stoves, or other apparatus (including amplifiers) that produce heat.
9. DO NOT defeat the safety purpose of the polarized or grounding type plug. A polarized plug has two blades with one wider than the other. A grounding type plug has two blades and a third grounding prong. The wider blade or the third prong are provided for your safety. If the provided plug does not fit into your outlet, consult an electrician for replacement of the obsolete outlet.
10. PROTECT the power cord from being walked on or pinched, particularly at plugs, convenience receptacles, and the point where they exit from the apparatus.
11. ONLY USE attachments/accessories specified by the manufacturer.
12. USE only with a cart, stand, tripod, bracket, or table specified by the manufacturer, or sold with the apparatus. When a cart is used, use caution when moving the cart/apparatus combination to avoid injury from tip-over.



13. UNPLUG this apparatus during lightning storms or when unused for long periods of time.

Certifications

This product meets the Essential Requirements of all relevant European directives and is eligible for CE marking.

The CE Declaration of Conformity can be obtained from: www.shure.com/europe/compliance

Authorized European representative:

Shure Europe GmbH

Global Compliance

Jakob-Dieffenbacher-Str. 12

75031 Eppingen, Germany

Phone: +49-7262-92 49 0

Email: info@shure.de

www.shure.com