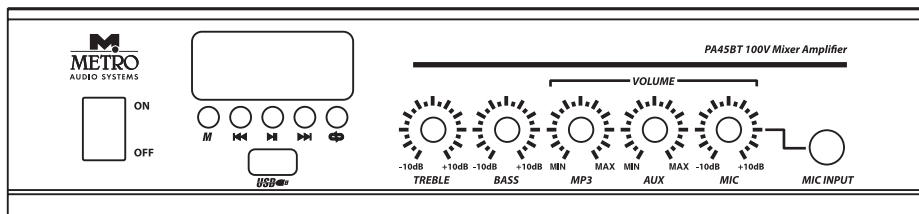




PUBLIC ADDRESS SYSTEMS

# PA-45BT

STEREO MIXER AMPLIFIER



USER MANUAL

## INTRODUCTION

Thank you for purchasing the PA45BT Metro Audio Systems amplifier. This device is designed to work as a public address system and is suitable for hotels, shops, houses of worship and other commercial applications. To ensure the safe and efficient operation of your device, please read this instruction manual before, and save it for future reference.

### SUPPORT AND SERVICE

Metro Audio Systems maintains a wide network of dealers and service centers. These local agencies will be able to answer your questions and take care of any problems.

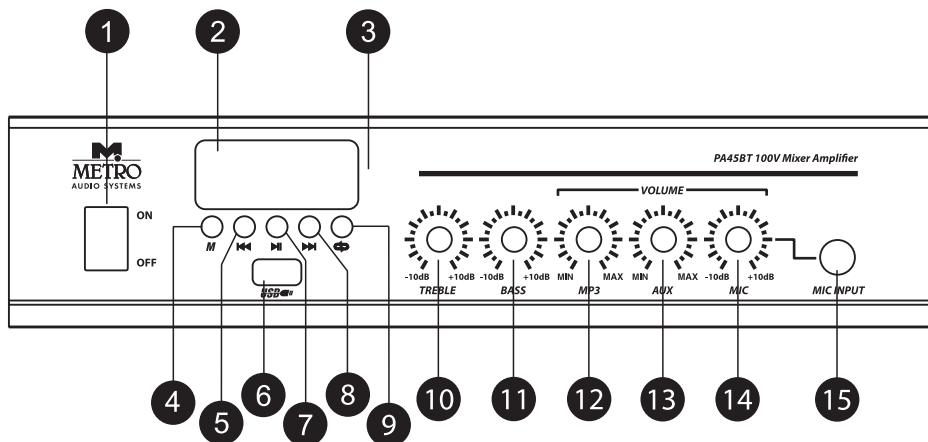
### WEBSITE

Our website, [www.metroaudiosystems.gr](http://www.metroaudiosystems.gr), is factory-maintained and supported in multiple languages. Visit frequently for new announcements, typical questions, and other user information.

### IMPORTANT SAFETY PRECAUTIONS

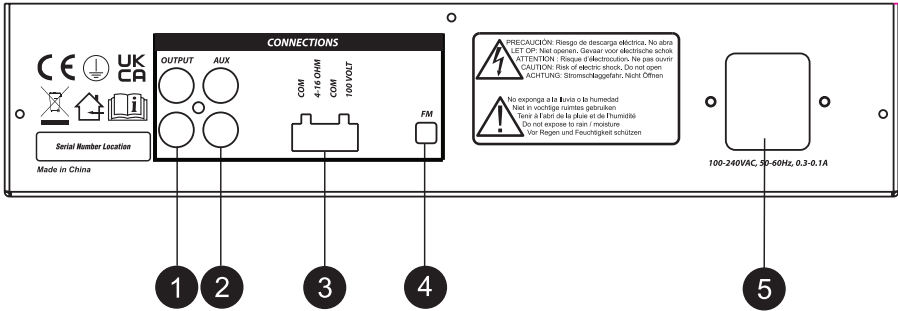
The products of Metro Audio Systems are designed for safe operation, and have been certified by recognized product safety agencies to meet all normal standards for this type of product. However, dangerous voltages and power levels exist within the covers of this amplifier. The user is requested to study the precautions in this manual. If the product has been dropped, dented, soaked, or appears to have loose parts inside, the risk of shock is increased. Unplug the power supply, and take the product to qualified service personnel for inspection and repairs.

## FRONT PANEL DESCRIPTION



- 1. Power Switch:** Turn the device ON or OFF
- 2. Display:** Led Display
- 3. Remote Control Sensor:** This sensor receives the infrared signal from the remote control.
- 4. Mode Button:** Press to change player modes USB, AUX, BT, FM.
- 5. Play / Pause Button:** Press this button to start or pause play in every mode.
- 6. USB Port:** Use this socket to connect your USB drive or external disk to the unit a USB interface.(Note: the USB used must be less than 64GB)
- 7. Previous Button:** Pressing the previous track button briefly steps backwards through tracks.
- 8. Next Button:** Press to move to the next track in MP3 and Bluetooth mode.
- 9. Repeat Mode Button:** Press the repeat button once to continually repeat all tracks, press repeat once more to repeat just the current track.
- 10. Treble control:** Adjust the high frequencies of the corresponding channel.
- 11. Bass control:** Adjust the low frequencies of the corresponding channel
- 12. MP3 Output level control:** Adjust the volume of the MP3 channel.
- 13. AUX Output level control:** Adjust the volume of the AUX channel.
- 14. Mic output level control:** Adjust the volume of the MIC channel.
- 15. Mic input jack:** Connect a microphone to the 6.35mm jack input.

## REAR PANEL DESCRIPTION



- 1. AUX out connectors:** Further amplifiers can be connected from these sockets.
- 2. Aux in connectors:** This stereo RCA input can be used to connect various audio sources.
- 3. Speaker Terminal:** Speaker connections are provided as terminals on the rear panel.
- 4. FM Antenna connection:** Connection terminal for FM Antenna.
- 5. AC Power Supply:** Socket for plugging in the supplied power cord (top).

## SPECIFICATIONS

<b>Output Power RMS</b>	45W
<b>Impedance</b>	100V, 160hm, 8 Ohm, 4 Ohm
<b>Frequency Response</b>	50Hz – 18kHz
<b>Signal-to-noise ratio</b>	75dB
<b>Power Supply</b>	220-240VAC 50Hz
<b>Dimensions (L x W x H)</b>	205 x 285 x 65mm
<b>Weight (kg)</b>	1.85

## WARRANTY

### **Disclaimer**

METRO AUDIO SYSTEMS, is not liable for any damage to amplifiers or any other equipment that is caused by negligence or improper installation and/or use of this loudspeaker product.

### **METRO AUDIO SYSTEMS 2 Year Limited Warranty**

METRO AUDIO SYSTEMS guarantees its products to be free from defective material and / or workmanship for a period of two (2) years max from date of sale, and will replace defective parts and repair malfunctioning products under this warranty when the defect occurs under normal installation and use - provided the unit is returned to one of our authorized service stations via prepaid transportation with a copy of proof of purchase (i.e., sales receipt). This warranty provides that the examination of the return product must indicate, in our judgment, a manufacturing defect. This warranty does not extend to any product which has been subjected to misuse, neglect, accident, improper installation, or where the date code has been removed or defaced. METRO AUDIO SYSTEMS shall not be liable for incidental and/or consequential damages. This warranty gives you specific legal rights. This limited warranty is freely transferable during the term of the warranty period.

In the event that this product was manufactured for export and sale outside of the Greek Region, then this limited warranty shall not apply. Removal of the serial number on this product, or purchase of this product from an unauthorized dealer, will void this limited warranty.

PUBLIC ADDRESS SYSTEMS

# PA-45BT

STEREO MIXER AMPLIFIER



91 Pentelis Av. 15234 Chalandri, Athens, Greece

**Tel:** +302106129821 **email:** [info@metroaudiosystems.gr](mailto:info@metroaudiosystems.gr)

[www.metroaudiosystems.gr](http://www.metroaudiosystems.gr)

